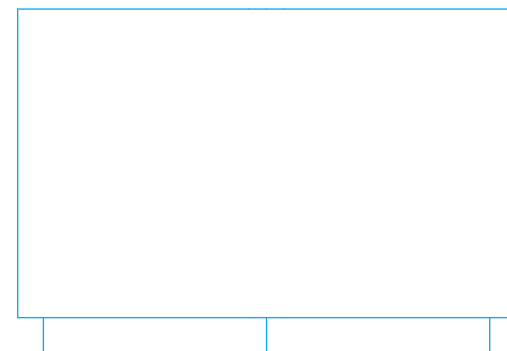
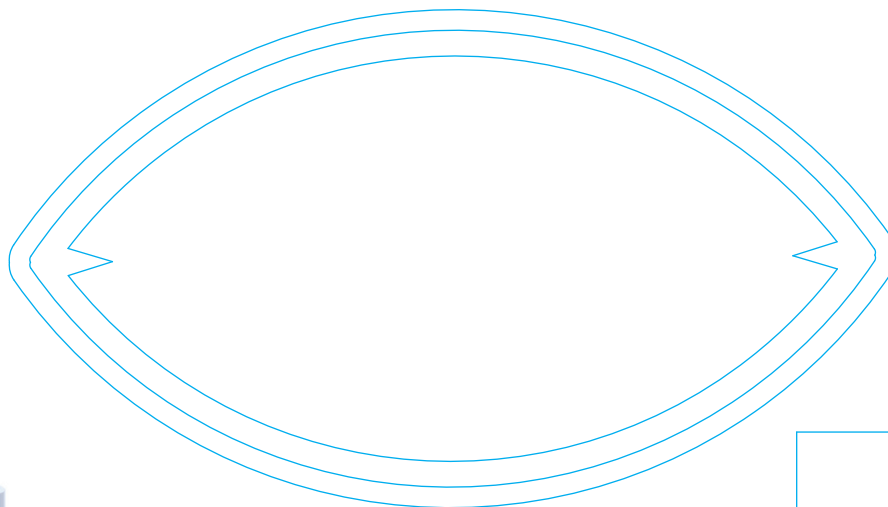
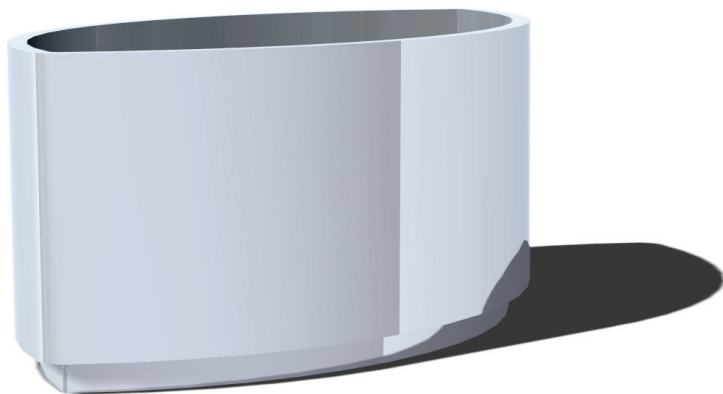


nr katalogowy / catalogue no.

13-15-40

donica / planter



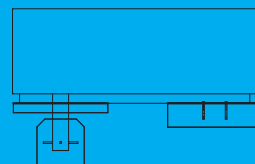
MATERIAŁY / MATERIALS

- blacha i profil zamknięty ze stali kwasoodpornej
- stainless steel plate and closed profile

WYMIARY / SIZE

- dowolne wymiary / any size available

MONTAŻ / ASSEMBLY



kotwy / anchor fixings

wkręty / screws

lub element wolno stojący / or free standing element

INFORMACJE DODATKOWE / OTHER INFORMATION

X

